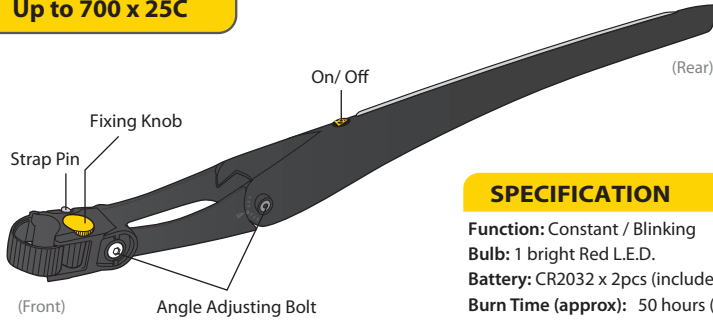




ROAD TIRE FITTING SIZE

Up to 700 x 25C



* Tool required: 2.5 mm Allen key (included), 5 mm Allen key

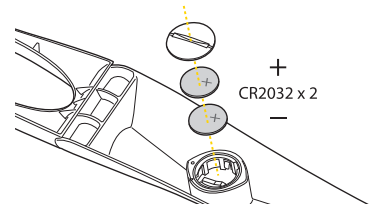
SPECIFICATION

Function: Constant / Blinking
Bulb: 1 bright Red L.E.D.
Battery: CR2032 x 2pcs (included)
Burn Time (approx): 50 hours (constant)
 100 hours (blinking)
Weight: 179 g / 6.31 oz (with batteries)

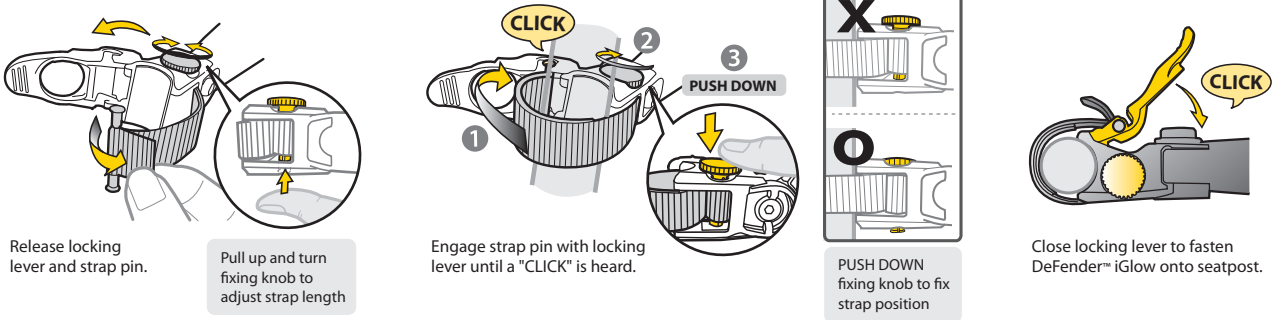
MODE



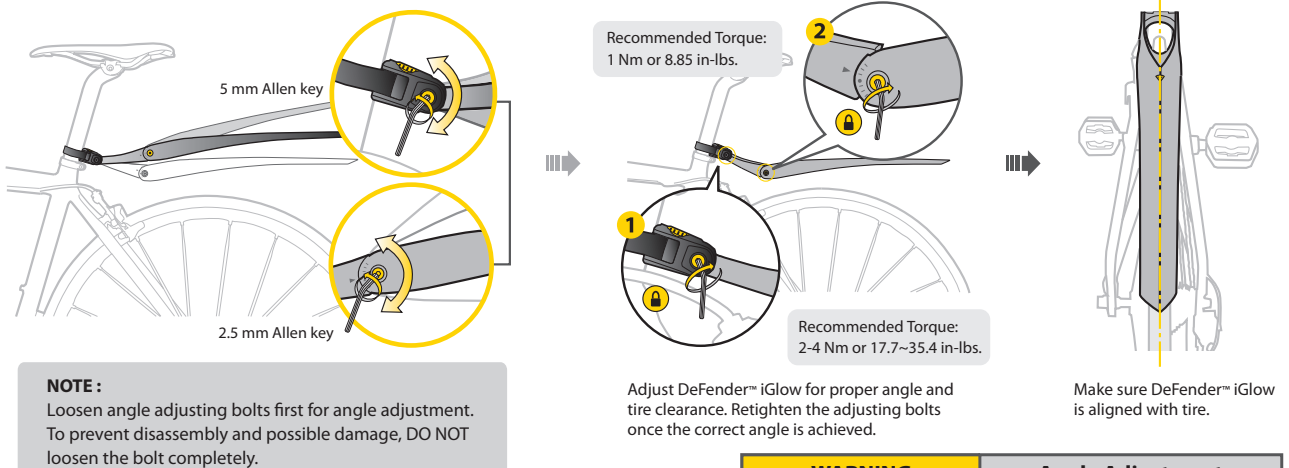
CHANGING BATTERY



INSTALLATION



DUALINK ANGLE ADJUSTMENT



NOTE:
 Loosen angle adjusting bolts first for angle adjustment. To prevent disassembly and possible damage, DO NOT loosen the bolt completely.

WARRANTY

2-year Warranty: All mechanical components against manufacturer defects only. Batteries are not covered under any implied warranty.
Warranty Claim Requirements
 To obtain warranty service, you must have your original sales receipt. Items returned without a sales receipt will assume that the warranty begins on the date of manufacture. All warranties will be void if the product is damaged due to user crash, abuse, system alteration, modification, or used in any way not intended as described in this manual.
 *The specifications and design are subject to change without notice.
 Please contact your Topeak dealer with any questions.
 For USA customer service call: 1-800-250-3068
 www.topeak.com



| WARNING | Angle Adjustment |
|--|------------------|
| Adjust DeFender™ iGlow for proper tire clearance. Improper angle or tire clearance may cause damage to DeFender™ iGlow or your bike and may cause bodily harm. | |
| RECOMMENDED Recommend to adjust the DeFender™ iGlow as close to the tire for better dirt coverage. | |